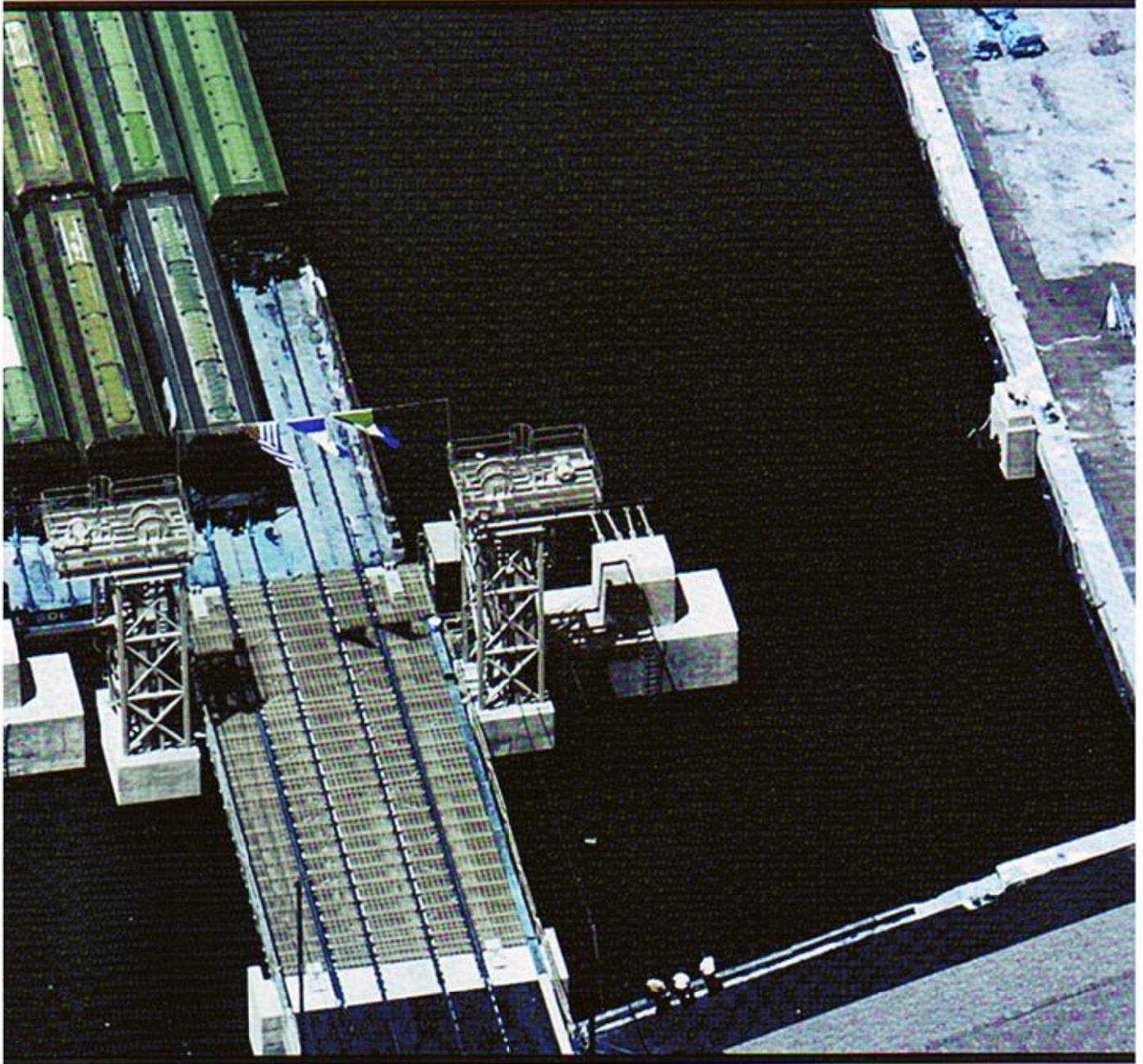

HPSI

Winch Systems



Hydraulic Power Systems, Inc.
North Kansas City, Mo.



Winch and hoist products for marine, construction and industrial requirements.



Custom designed, hydraulically powered winches with capability for spooling 3" wire rope.

H.P.S.I. has years of experience in developing hydraulic winching systems for the marine and heavy contractor.

- Hydraulic winch systems featuring Pullmaster and Lantec products
- Barge movers
- Fairleads
- Deck guides sheaves
- Add on crane drums
- Custom design
- Electric, diesel, gasoline, or hydraulic powered units
- Tower hoists with or without swinger
- Electric, pneumatic, hydraulic, infra red & radio remote controls available

System simplicity and reliable components are the design criteria on which we have developed a reputation for excellence. HPSI has the expertise and flexibility to satisfy your winching and hoisting requirements for anchor, spud, positioning, hoisting or other special service. *Winching problems?* You can count on HPSI for the solution.



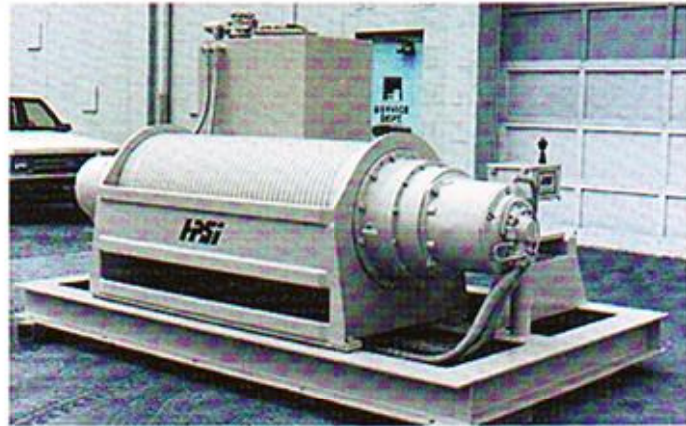
Self-propelled sectional barges utilizing a hydraulic power system, including dual outrives, and a four point Pullmaster winch anchor system.



Utility hoist using air cooled diesel engine and hydraulic winch.



Water tower erecting hoist with load line, boom line, and swinger, for use with special derrick.



Lantec single drum car puller.



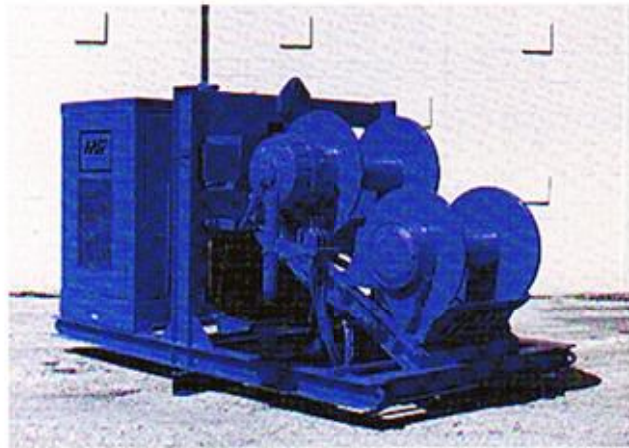
Crane mounted Pullmaster add-on drum with power-up/ power-down features for pile driving, or as an auxiliary line.



Electric over hydraulic two drum barge mover.



Combination utility and barge moving winch featuring Pullmaster model H25's.



Double drum waterfall diesel over hydraulic tower erecting hoist with Pullmaster model H25's, with freefalls.



HPSI also offers custom design and fabrication of special drives and structural lifting systems.

Hydraulic Power Systems, Inc. has years of experience helping customers solve unique problems, related to special one of a kind situations. In addition to winching and hoisting systems, we design complex material handling drives for conveyors, tunnel service equipment, and a variety of other unusual construction applications. Control systems range from simple manual

levers and pedals, to sophisticated radio remotes or programmable controllers.

HPSI can supply all your hoist and winch accessories including: blocks, fairleads, horizontal and vertical deck guide sheaves, fleeting sheaves, level winds, footage counters, and line tension measuring systems.

Count on HPSI to respond promptly to all your winching, hoisting, and special drive inquiries. Let our experience work for you today.



PRODUCT LIST:

- Vibratory Pile Hammers
- Hydraulic Impact Pile Hammers
- Hydraulic Auger Systems
- Diesel, Gasoline and Electrically-Driven Hydraulic Power Units
- Fixed and Swinging Pile Driving Lead Systems
- Custom Hydraulic System Design and Manufacturing
- Barge and Rail Spotting Systems
- Add-on Crane Drums
- Winch Systems
- Planetary Drives
- Control Systems

HYDRAULIC POWER SYSTEMS, INC. • 1203 OZARK • NORTH KANSAS CITY, MISSOURI 64116
PHONE (816) 221-4774
FAX (816) 221-4591